

MID-ISLAND PLANNING

KICK-OFF MEETING

HILTON HEAD ISLAND // 8.16.2021

MKSK

DK&P

Kimley»Horn

LS3P

HR

CRANSTON
ENGINEERING

MEETING PURPOSE

- + Introduce Project Team and Roles
- + Provide Project Overview, Schedule, and Milestones
- + Discuss Early Thoughts for Planning Initiative Area
- + Discuss Early Thoughts for Park
- + Outline Next Steps

PROJECT TEAM AND ROLES

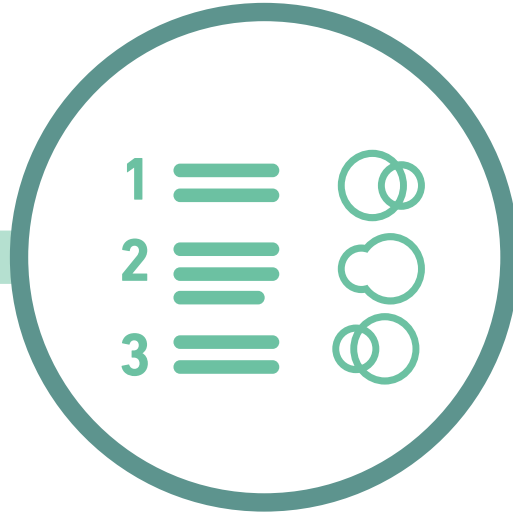


| PROJECT TASKS



Initiative Area Framework Plan

Identify key opportunities and build
community consensus for a future vision.



Mid-Island Tract Park Master Plan

Establish a park program and
craft a design concept plan.



Park Construction Documentation Set

Assemble a detailed drawing set to
enable the bidding and construction
of the new park.

SCHEDULE + MILESTONES



- 1 Review and Research
- 2 Kick-Off/Introduction Meeting, Site Tour
- 3 Area Analysis
- 4 Market Analysis & Redevelopment Feasibility
- 5 Community Engagement
- 6 Preliminary Redevelopment Strategy & Character Visioning
- 7 Final Redevelopment Strategy, Document, & Presentation

Task 2 // Park Design

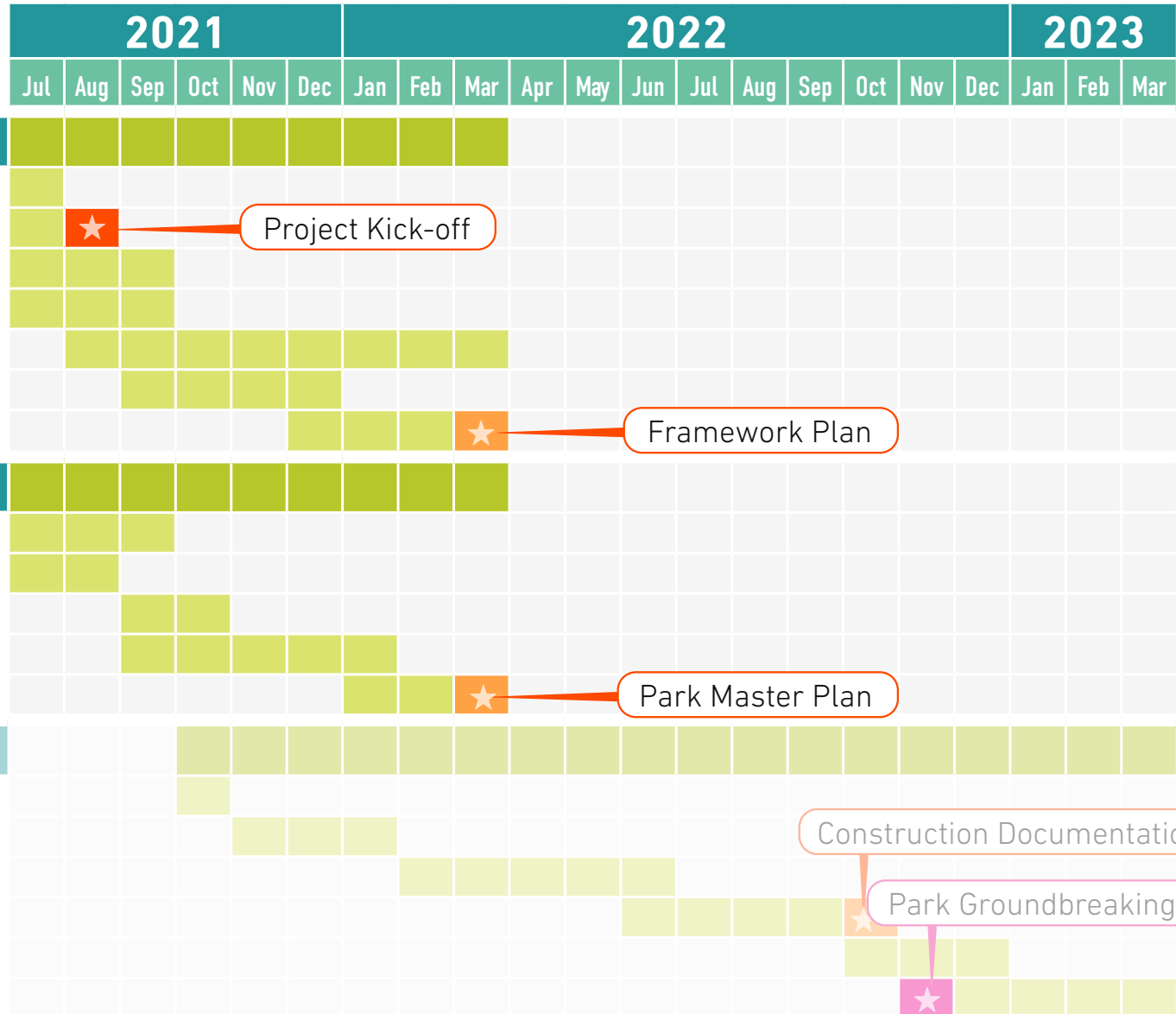
- 1 Review Existing Plans
- 2 Kick-Off/Introduction Meeting, Site Tour
- 3 Conduct Site Analysis & Program Validation
- 4 Concept Plans
- 5 Vision Plan/Final Plan

Task 3 // Detailed Park Design

- 1 Pre-Design
- 2 Schematic Design
- 3 Design Development
- 4 Construction Documentation

Task 4 // Permitting, Bidding, & Negotiations

Task 5 // Construction Phase Services



SCHEDULE + MILESTONES



- 1 Review and Research
- 2 Kick-Off/Introduction Meeting, Site Tour
- 3 Area Analysis
- 4 Market Analysis & Redevelopment Feasibility
- 5 Community Engagement
- 6 Preliminary Redevelopment Strategy & Character Visioning
- 7 Final Redevelopment Strategy, Document, & Presentation

Task 2 // Park Design

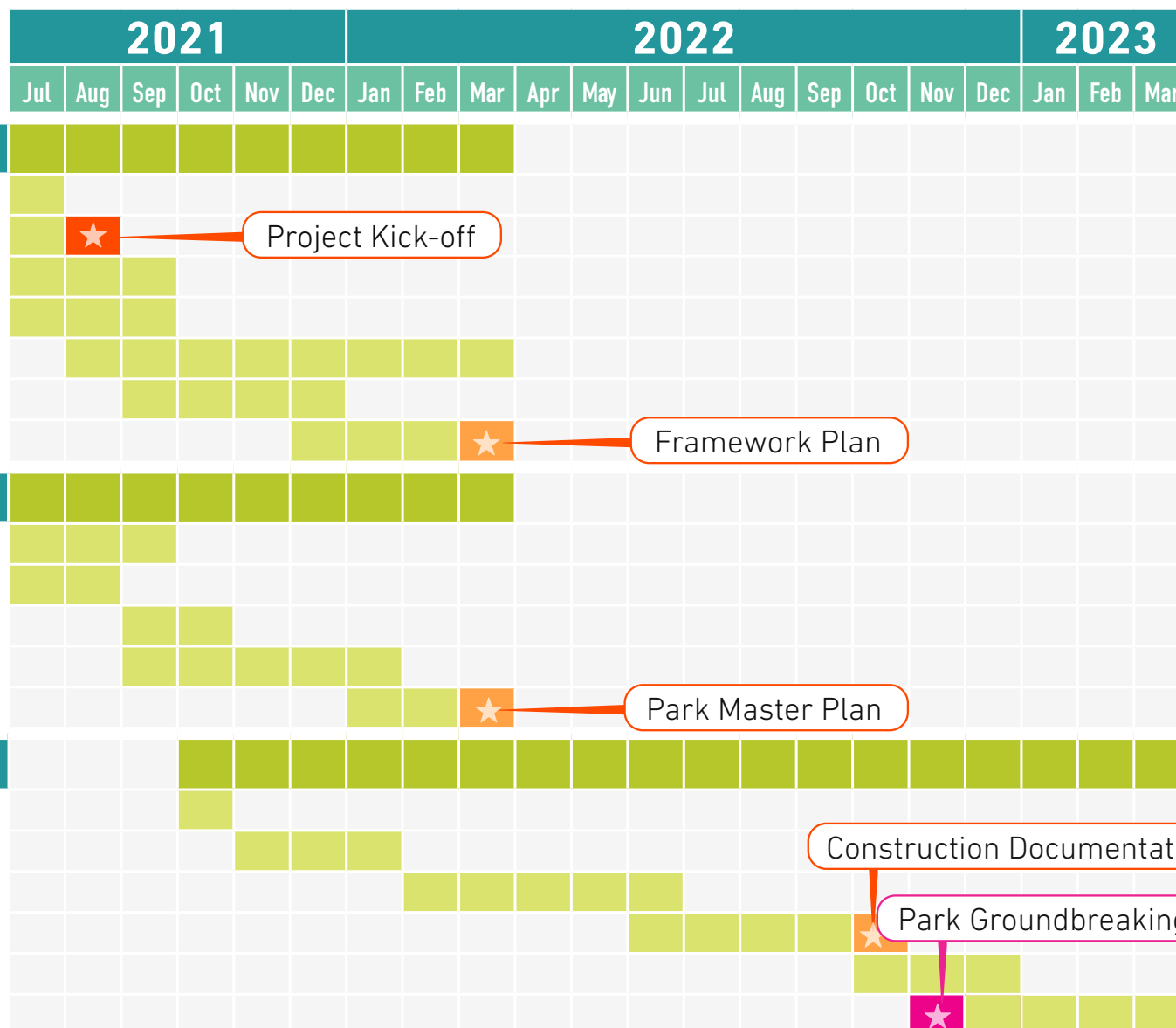
- 1 Review Existing Plans
- 2 Kick-Off/Introduction Meeting, Site Tour
- 3 Conduct Site Analysis & Program Validation
- 4 Concept Plans
- 5 Vision Plan/Final Plan

Task 3 // Detailed Park Design

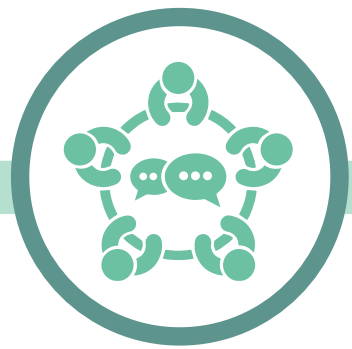
- 1 Pre-Design
- 2 Schematic Design
- 3 Design Development
- 4 Construction Documentation

Task 4 // Permitting, Bidding, & Negotiations

Task 5 // Construction Phase Services



COMMUNITY ENGAGEMENT APPROACH



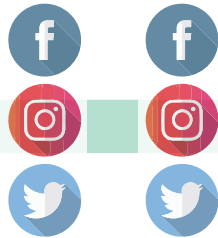
Official Project Kick-off

Council
Parks Commission
Town Staff
Stakeholder Discussions



Highlight Prior Community Input

(July-Sept)
Our Plan
Parks Master Plan
Airport Master Plan
Others Relevant Plans

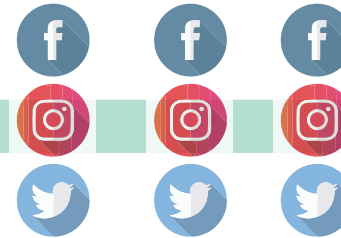


Social Media Outreach



Visioning Workshop

Interactive Community
Workshop &
Web Survey



Social Media Outreach

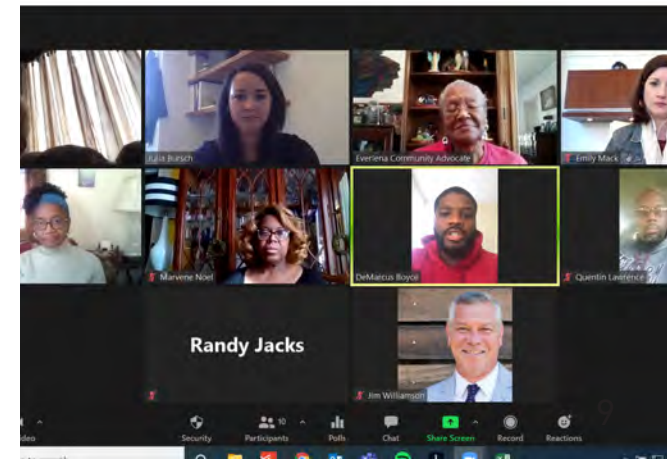


Community Open House

(Feb-Mar)
Open House "Drop-in"
Highlighting the Framework
and Park Master Plans

STAKEHOLDER DISCUSSIONS

- + Neighborhood Representatives
- + Historic and Culture Resources
- + Parks and Recreation
- + Passive Recreation & Ecology
- + Active Recreation
- + Development Community
- + Commercial Property Owners
- + Hilton Head Airport
- + Utilities



COMMUNITY OUTREACH & PUBLIC ENGAGEMENT



Virtual Public Meeting #1 Summary

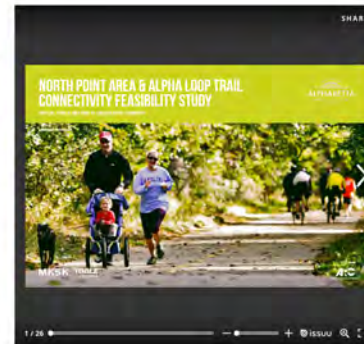
Thank you to everyone who participated in our first Virtual Public Meeting for the North Point Area & Alpha Loop Trail Connectivity Feasibility Study!

We had hundreds make their voice heard by participating in the online exercises below and many more than that take the time to educate themselves about the study and help spread the word. If you are curious to see what Alpharetta had to say, follow the link to browse a summary of the input collected to date!

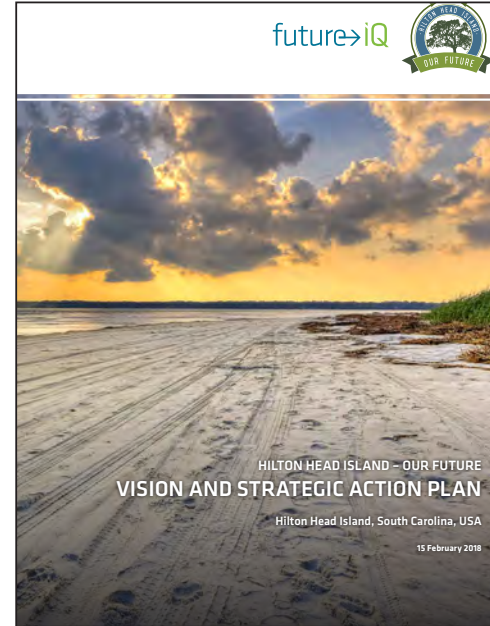
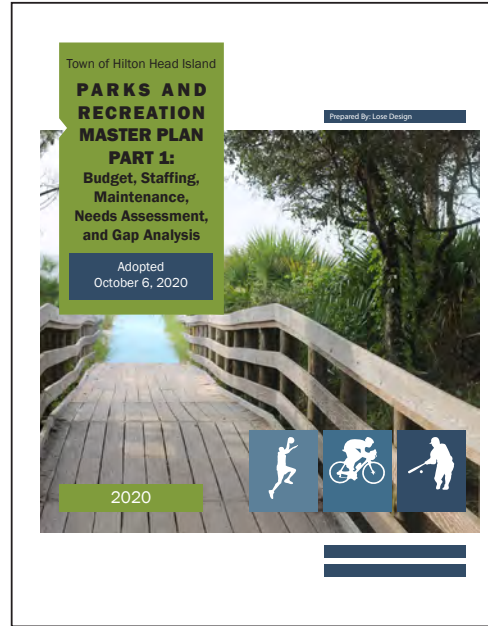
Next, the Planning Team will take everyone's ideas and translate them into a shared vision for this critical connection. Once the vision is established, they will develop a series of strategies and design recommendations to make that vision a reality!

We will be back to share the vision, strategies, and recommendations this summer, so please stay tuned and stay involved!

[Download the Summary](#)



| PRIOR PLANS AND STUDIES



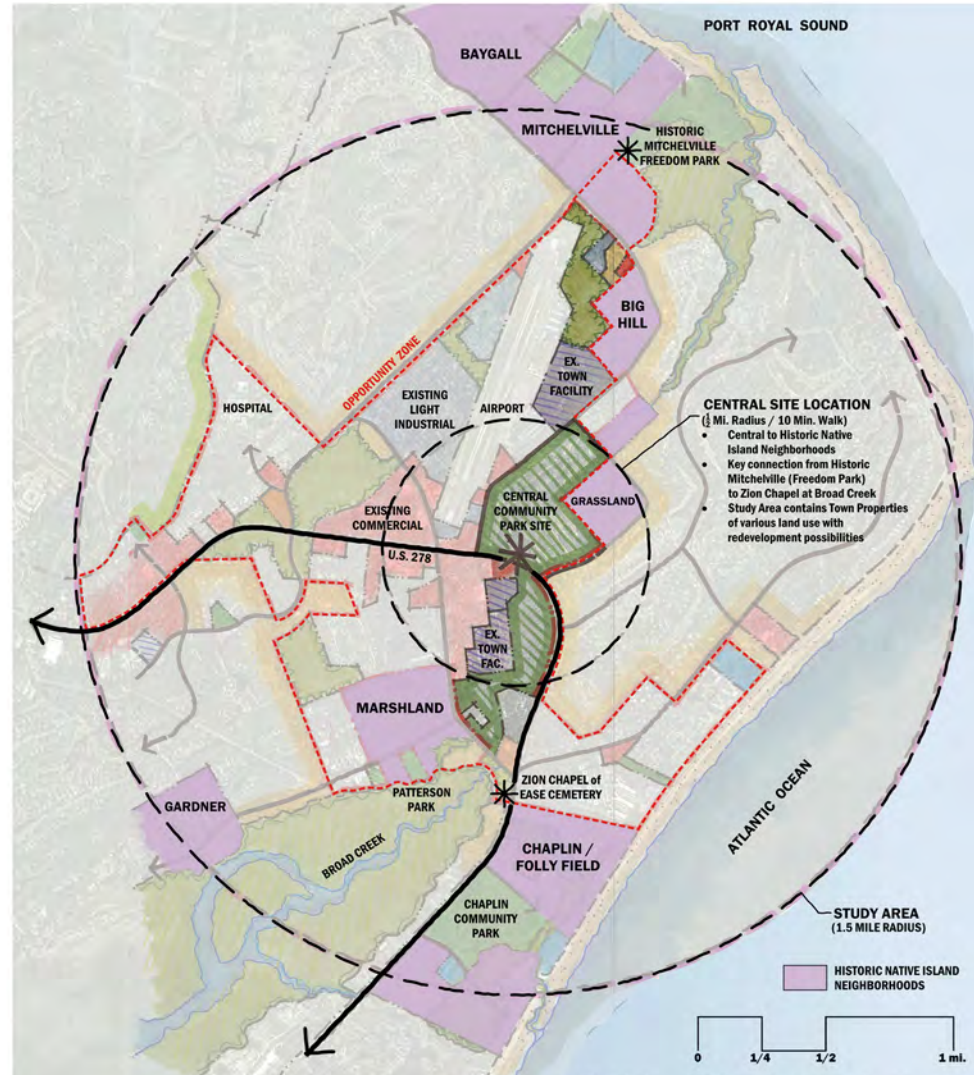
ADDITIONAL SOURCES OF INPUT & INFO

- + Our Plan 2020
- + Parks and Recreation Master Plan
- + Our Future Vision and Strategic Action Plan
- + Workforce Housing Strategic Plan
- + HHI Airport Master Plan
- + LATS Long Range Transportation Plan 2040
- + Gullah Culture Preservation Report

An aerial photograph of a coastal region, heavily tinted with a teal color. The image shows a large industrial facility, possibly a refinery or chemical plant, with several large storage tanks and processing units. The facility is situated near a body of water, with a long pier or breakwater extending into the sea. The surrounding area is densely forested, with some residential or commercial buildings visible in the foreground. The overall scene suggests a complex interplay between industrial development and natural environment.

PLANNING INITIATIVE AREA

PLANNING INITIATIVE STUDY AREA



REDEVELOPMENT, INFILL, & REUSE POTENTIAL



AIRPORT VICINITY

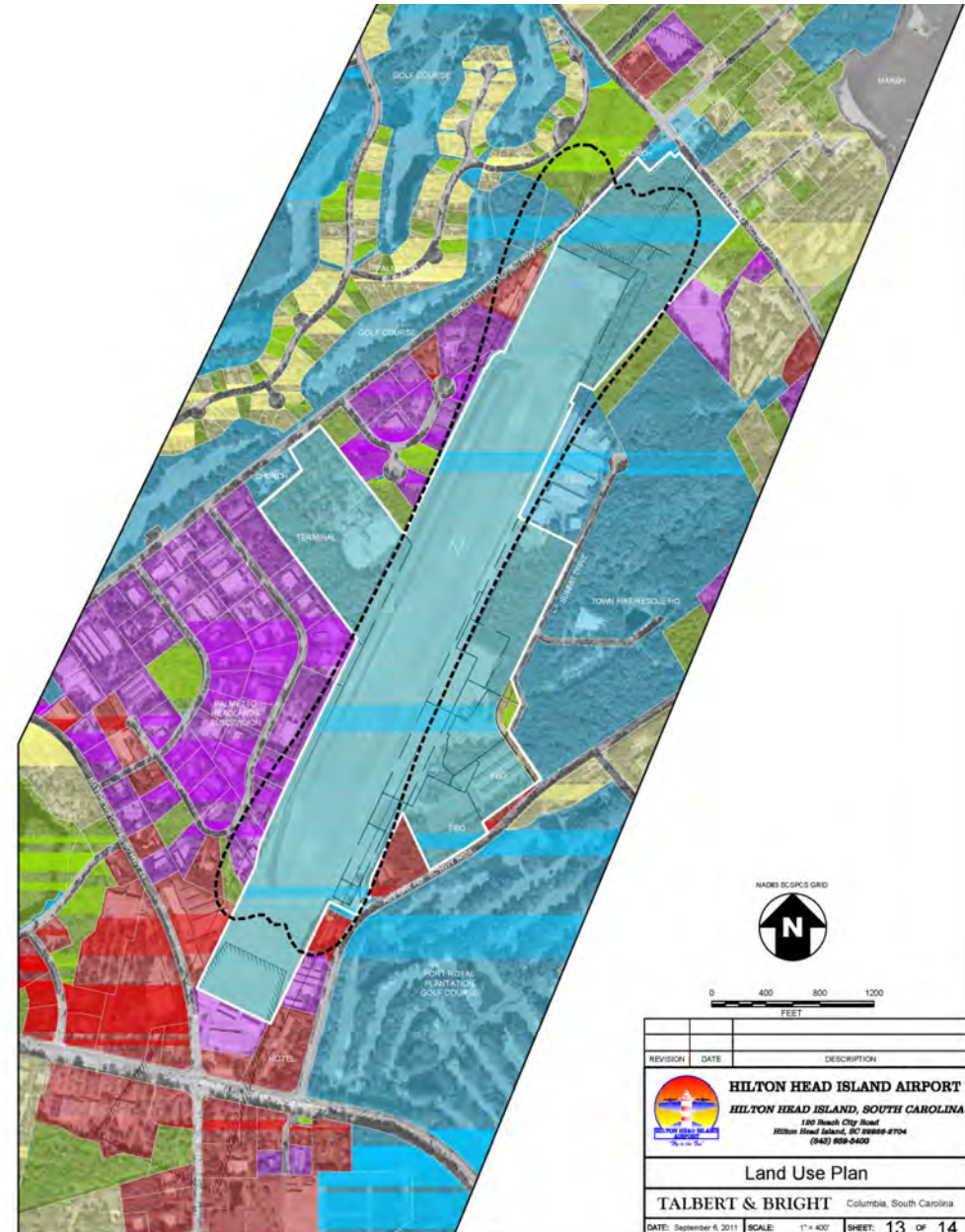


AIRPORT VICINITY



- NOTES:
1. PROPERTY PARCEL LINES AND LAND USE CLASSIFICATIONS ARE PROVIDED BY BEAUFORT COUNTY AND THE TOWN OF HILTON HEAD ISLAND.
 2. BASE AERIAL PHOTOGRAPHY IS DATED 2007 AND PROVIDED BY THE SOUTH CAROLINA AERONAUTICS COMMISSION.

LEGEND	
	EXISTING PROPERTY LINE
	PARCEL BOUNDARIES
	YR 2029 65 LBN NOISE CONTOUR
	ULTIMATE RFP
	COMMERCIAL LAND USE
	INDUSTRIAL LAND USE
	OTHER LAND USE
	PUBLIC AND CIVIC LAND USE
	RESIDENTIAL LAND USE



NAD83 SCSPCS GRID

0 400 800 1200
FEET

REVISION	DATE	DESCRIPTION

HILTON HEAD ISLAND AIRPORT
HILTON HEAD ISLAND, SOUTH CAROLINA
100 Beach City Road
Hilton Head Island, SC 29928-4704
(843) 809-0400

Land Use Plan

TALBERT & BRIGHT Columbia, South Carolina

DATE: September 5, 2011 | SCALE: 1" = 400' | SHEET: 13 OF 14

| MARKET STUDY

- + Forecast short and long-term market demand for amount and types of residential, commercial, services, and employment uses.



| NEIGHBORHOODS

+ Analysis and recommendations will be sensitive to existing residential neighborhoods and plantations.



| OPEN SPACE & TRAIL CONNECTIVITY

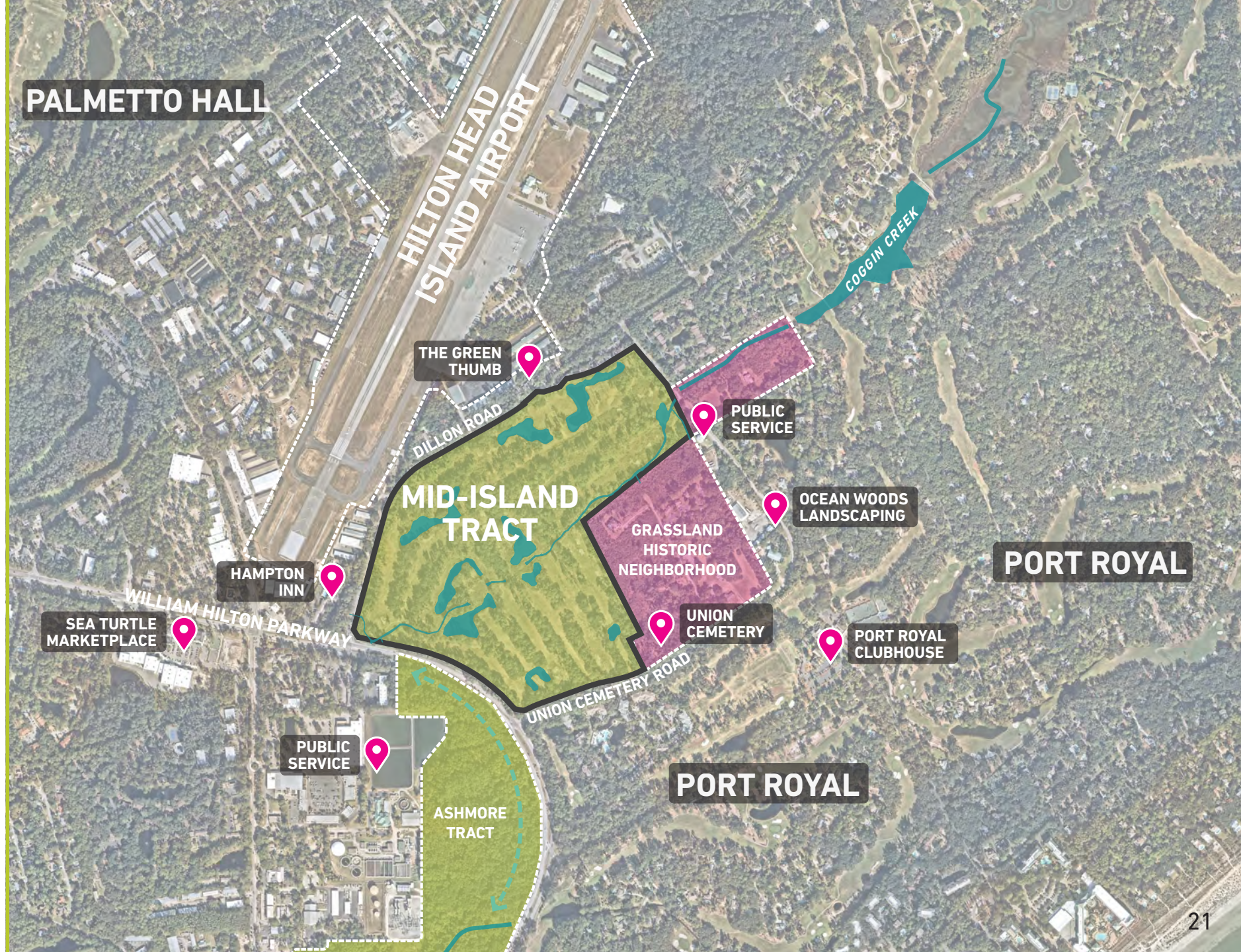
- + Examine open space, greenway, and trail connections to adjacent neighborhoods and the island-wide network.



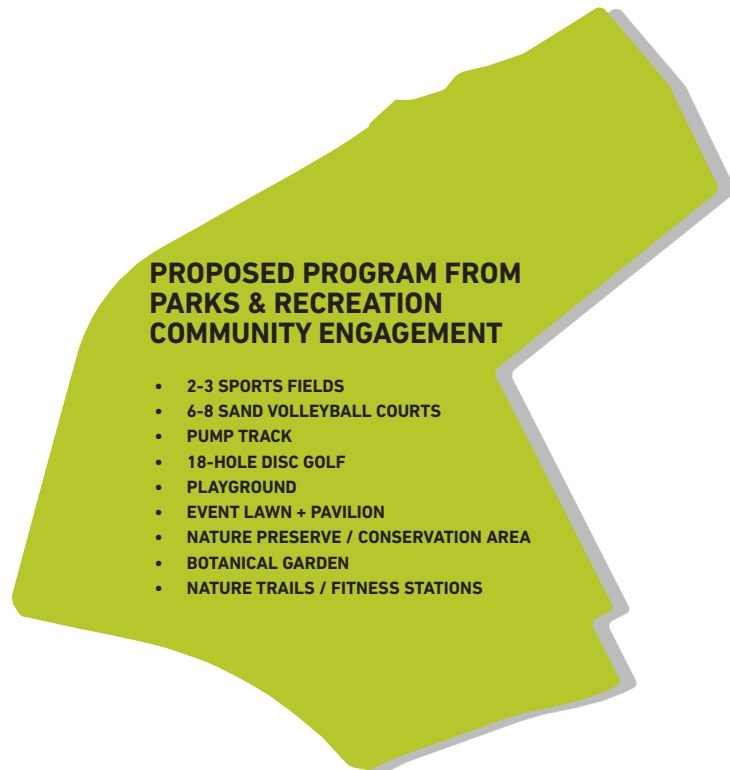


PARK PLANNING & DESIGN

ADJACENT PROPERTIES



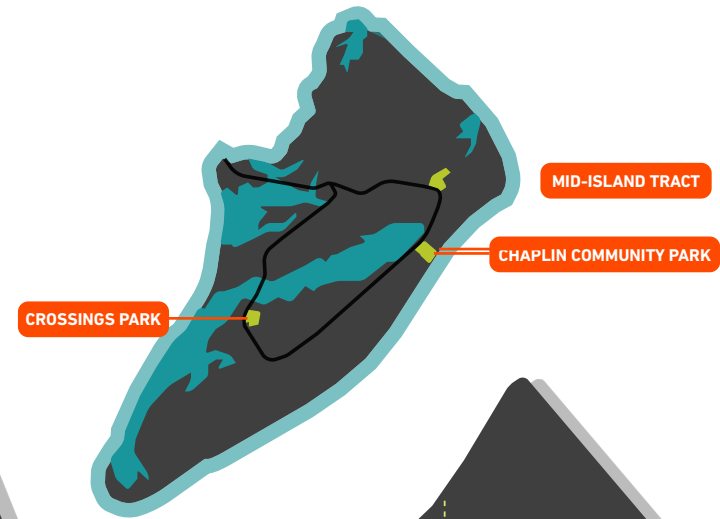
PROGRAM VALIDATION



MID-ISLAND TRACT



CROSSINGS PARK



CHAPLIN COMMUNITY PARK

COMPARISON PARKS



FORSYTH PARK
SAVANNAH GA - 30 ACRES



WHITE POINT GARDEN (BATTERY)
CHARLESTON SC - 6 ACRES



FALLS PARK
GREENVILLE SC - 32 ACRES

| PARK PROGRAM – PASSIVE

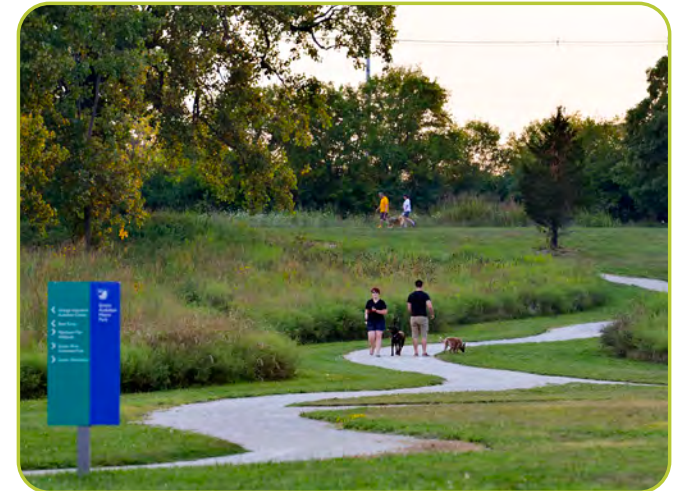
NATURE PRESERVE



PLAYGROUND



TRAILS + FITNESS



| PARK PROGRAM – ACTIVE

YOGA



DISC GOLF



HORSESHOES



CORNHOLE



BOCCE



TABLE TENNIS



| PARK PROGRAM – ACTIVE

PICKLE BALL



TENNIS



SOCCER FIELDS



SAND VOLLEYBALL



CLIMBING



PUMP TRACK



| PARK PROGRAM – CIVIC & GATHERING

SPLASH PAD



EVENT LAWN



CIVIC + COMMUNITY STRUCTURES



SEATING



PAVILION



FOOD & BEVERAGE



| PARK PROGRAM – CULTURAL

GULLAH HERITAGE



ART



BOTANICAL GARDEN



FAIRWAYS

- PARKING AREAS
- EVENT PROGRAMMING
- SPORTS FIELDS
- DISASTER DEBRIS



CONNECTIVITY



WATER + STORM

- 9 PONDS CONNECTED TO STORM
- MUCH OF THE SITE IS SUSCEPTIBLE TO FLOODING
- 0.07 ACRES OF WETLAND
- CHANNELIZATION / EROSION



BAPTIST CHURCH



NEXT STEPS

- + Kick-off Meetings and Stakeholder Engagement
- + Continue Planning Area and Mid-Island Tract Analysis
- + Start Market Study
- + Engage the Community

An aerial photograph of a coastal region. On the left, there's a large, rectangular industrial or airport facility with a long, straight runway or taxiway. To its right is a vast, green golf course with numerous fairways and green spaces. The foreground and middle ground are filled with dense green trees and some residential buildings. In the bottom right, there's a cluster of industrial structures, including large storage tanks and buildings. The top of the image shows a sandy beach and the ocean.

Thank You!