



CROSSINGS PARK

TOWN OF HILTON HEAD ISLAND // JUNE 2023
PARK MASTER PLAN REVIEW

MKSK

PROJECT PROCESS



WHERE WE STARTED

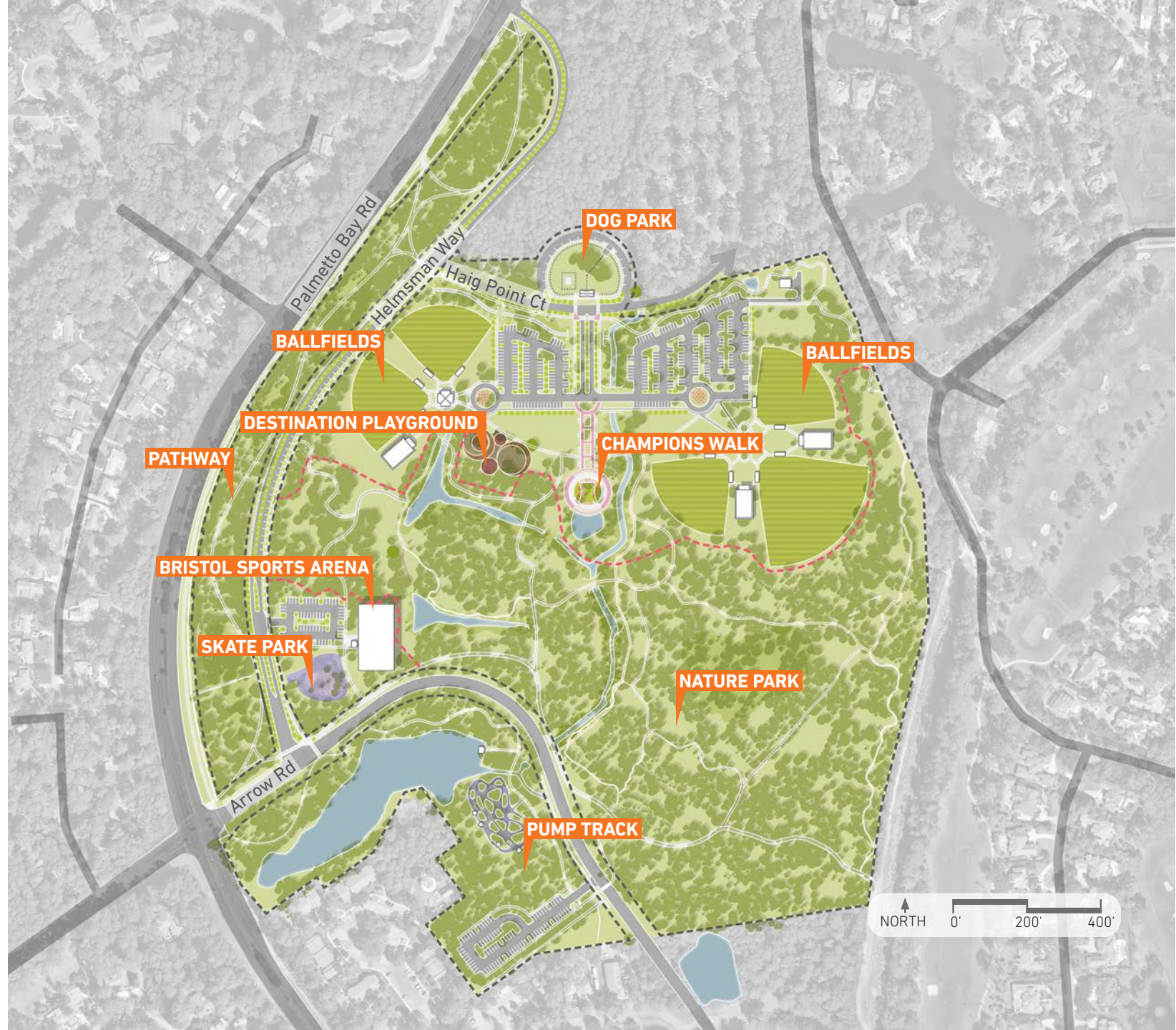
PREVIOUS PLAN | WHAT WE HEARD

- PRESERVE BUFFER LANDSCAPE BETWEEN PALMETTO BAY ROAD AND HELMSMAN WAY
- ARROW ROAD AND HELMSMAN WAY TO FEEL LIKE ROADS THROUGH A PARK, SLOWING TRAFFIC AND INCREASING SAFETY
- CONNECT THE DISPARATE PIECES OF THE PARK
- CREATE IMPACTFUL AND MEMORABLE PARK MOMENTS - A SENSE OF PLACE
- DEVELOP GATEWAYS INTO THE PARK
- BALANCE PROPOSED PROGRAM WITH EXISTING NATURAL RESOURCES
- CONSIDER ADAPTIVE REUSE OF EXISTING PARK INFRASTRUCTURE AND EXISTING DEVELOPED AREAS
- EMBRACE NATURAL RESOURCES AS PARK AMENITIES
- BLEND NEIGHBORHOOD PARK AMENITIES WITH ISLAND-WIDE PARK PROGRAM



PRELIMINARY PLAN

FEBRUARY 2023



PERSPECTIVE RENDERING

FEBRUARY 2023



PARKING

CHAMPIONS WALK

BALLFIELDS

FLEXIBLE-USE OPEN SPACE

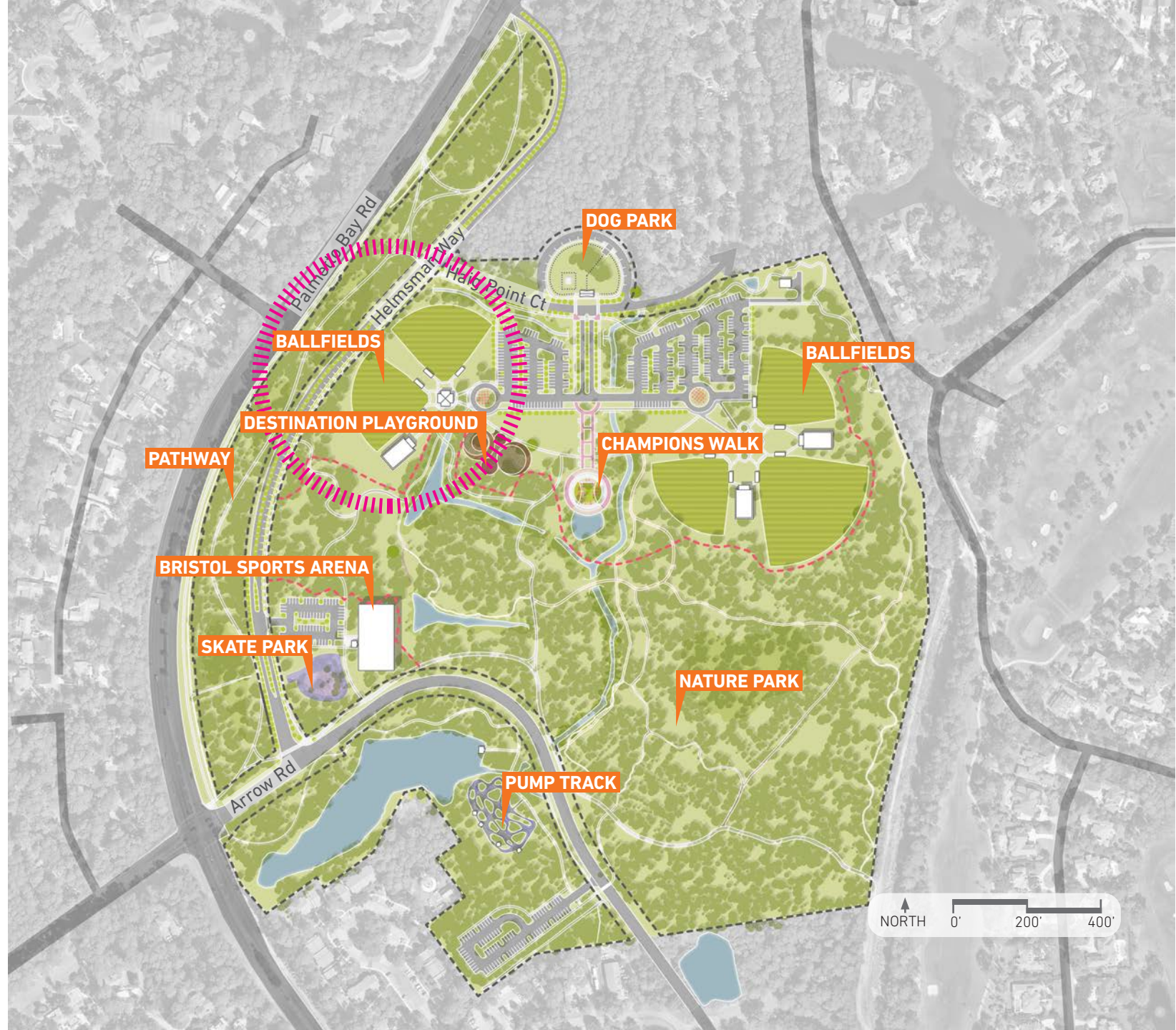
CHAMPIONS PLAZA

DESTINATION PLAYGROUND

NATURE PARK

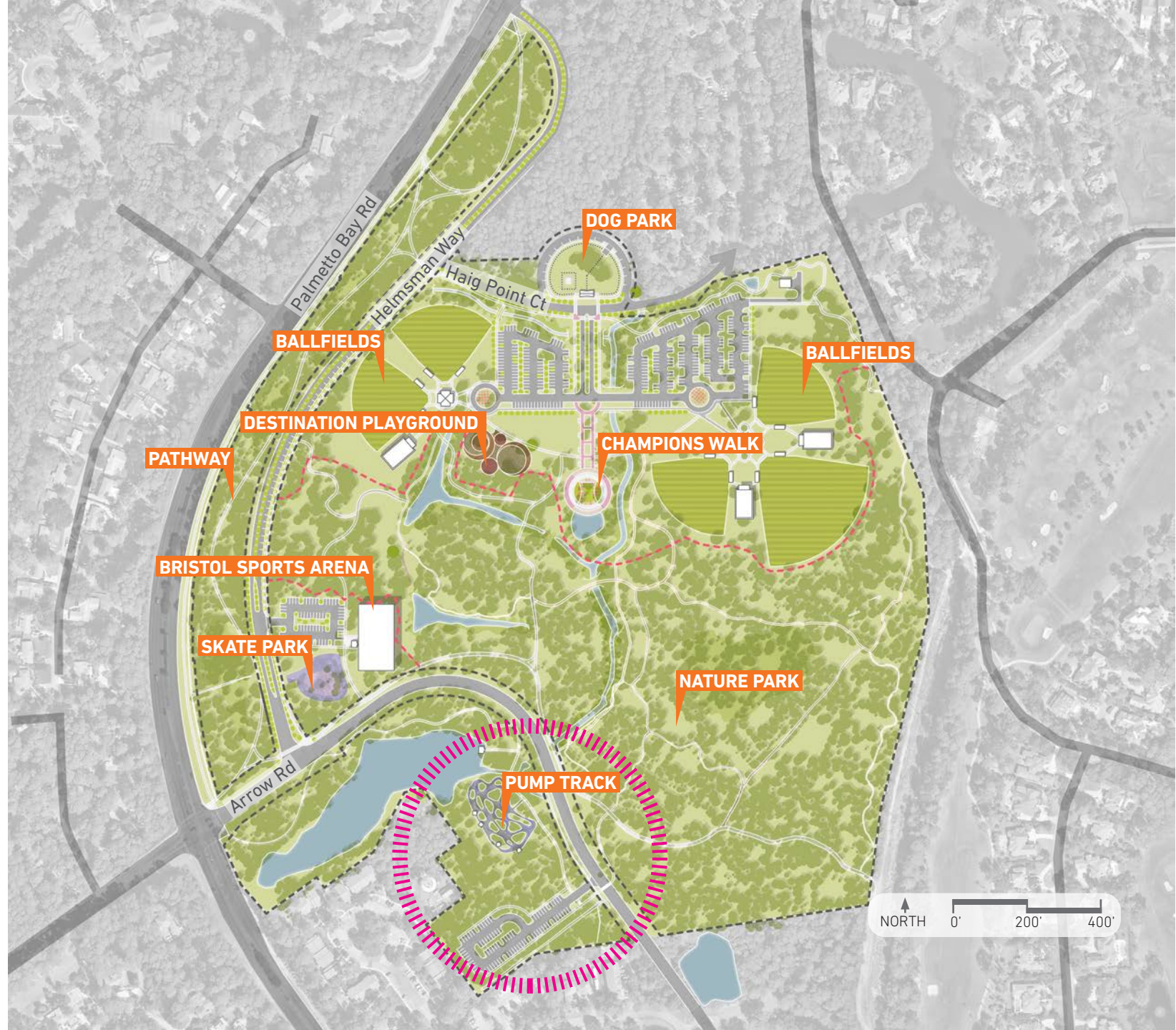
WHAT WE HEARD

- EXPLORE OPPORTUNITY TO INCLUDE 400 FT. BALLFIELD



WHAT WE HEARD

- EXPLORE OPPORTUNITY TO INCLUDE 400 FT. BALLFIELD
- SHIFT LOCATION OF MID-BLOCK CROSSING AND ASSOCIATED VEHICULAR PARKING TO ADDRESS SAFETY CONCERNS RAISED BY COUNCIL



ENLARGEMENT PLANS



BALLFIELDS EXISTING



CROSSINGS PARK
JUNE 2023

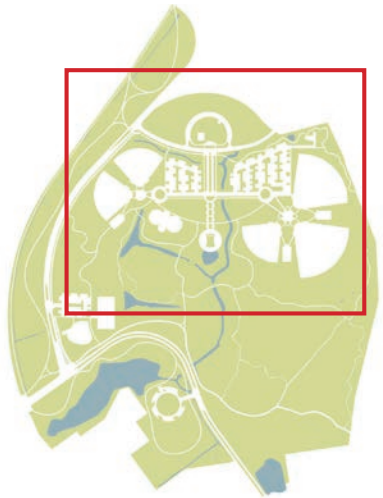


BALLFIELDS

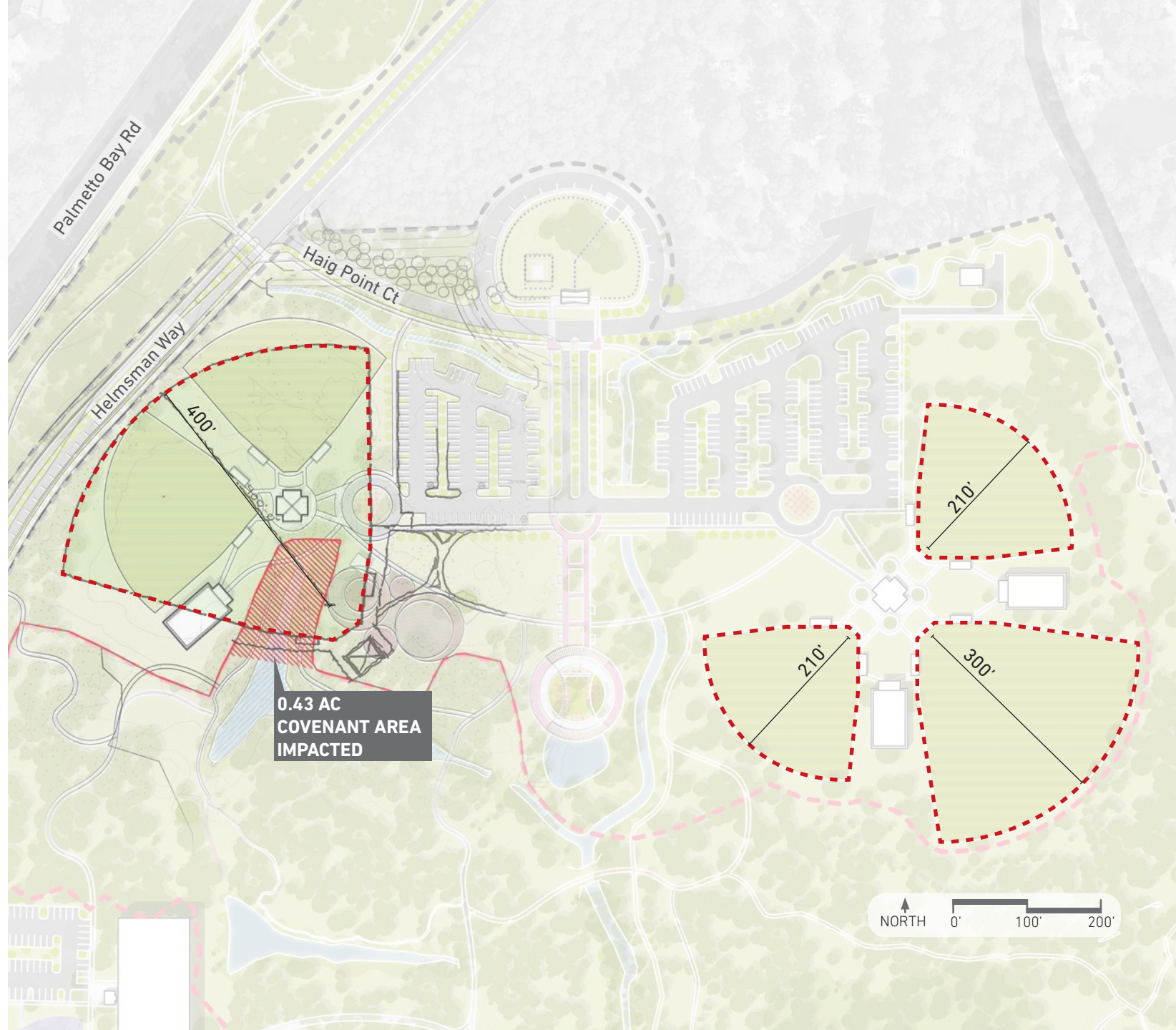
PROPOSED IN PRELIMINARY PLAN



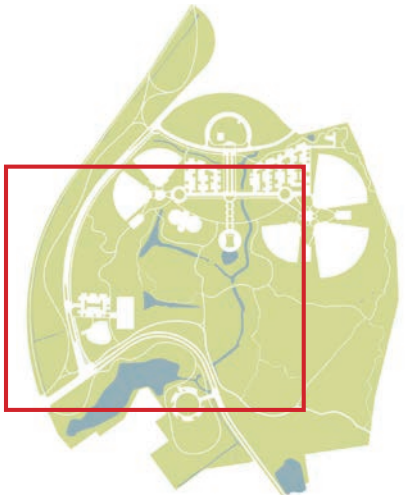
BALLFIELDS ALTERNATE



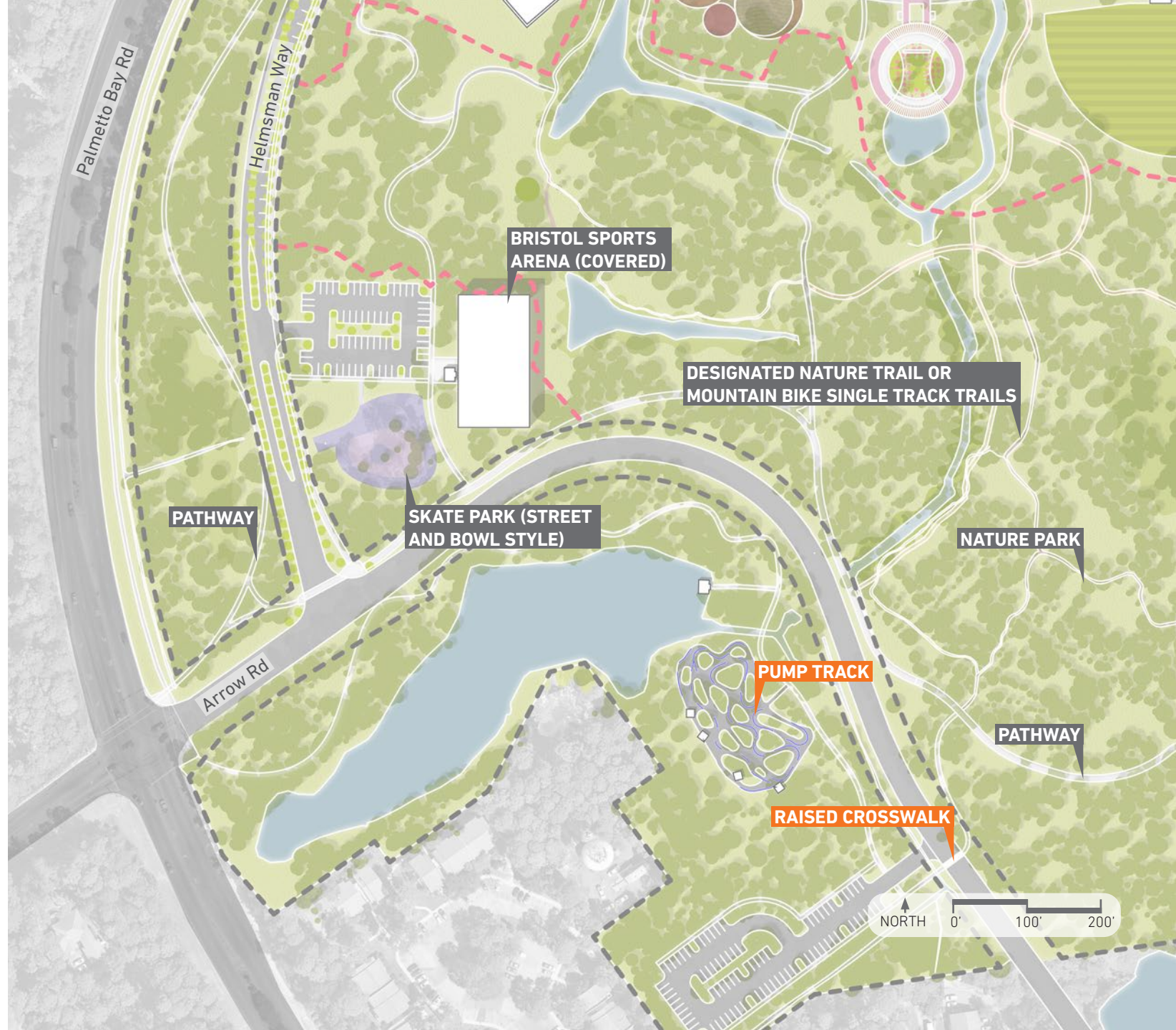
CROSSINGS PARK
JUNE 2023



ACTIVE RECREATION



CROSSINGS PARK
JUNE 2023



| ACTIVE RECREATION



SPORTS ARENA ARCHITECTURAL CHARACTER



MOUNTAIN BIKE TRAILS



NATURE TRAILS



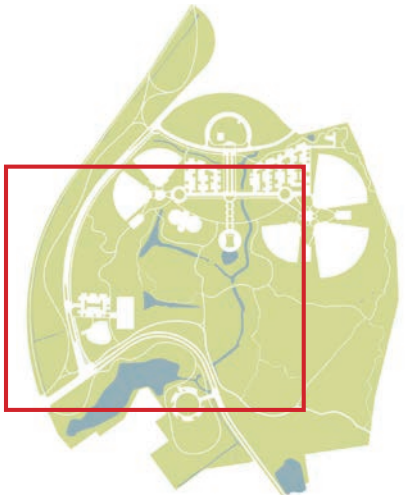
SKATE PARK

ACTIVE RECREATION

PUMP TRACK



ACTIVE RECREATION SUPPORTING AMENITIES



CROSSINGS PARK
JUNE 2023



PARKING

PARKING PROVISION NORTH: 288 SPACES

PARKING DEMAND NORTH: 236 SPACES

(ASSUMES 80% OF TOTAL DEMAND)

APA STANDARDS:

BALLFIELD: 250 SPACES

PLAYGROUND: 10 SPACES

DOG PARK: 15 SPACES

NATURE PARK: 20 SPACES

PEAK DEMAND IS EXPECTED TO BE WEEKEND TOURNAMENTS



PARKING

PARKING PROVISION NORTH: 288 SPACES

PARKING DEMAND NORTH: 236 SPACES

(ASSUMES 80% OF TOTAL DEMAND)

APA STANDARDS:

BALLFIELD: 250 SPACES

PLAYGROUND: 10 SPACES

DOG PARK: 15 SPACES

NATURE PARK: 20 SPACES

PARKING PROVISION SOUTH: 103 SPACES

PARKING DEMAND SOUTH: 88 SPACES

(ASSUMES 80% OF TOTAL DEMAND)

APA STANDARDS:

NATURE PARK: 30 SPACES

SKATE PARK: 20 SPACES

PUMP TRACK: 20 SPACES

SINGLE TRACK PATH: 10 SPACES

SPORT COURT: 30 SPACES



PARKING

PARKING PROVISION NORTH: 288 SPACES

PARKING DEMAND NORTH: 236 SPACES

(ASSUMES 80% OF TOTAL DEMAND)

APA STANDARDS:

BALLFIELD: 250 SPACES

PLAYGROUND: 10 SPACES

DOG PARK: 15 SPACES

NATURE PARK: 20 SPACES

PARKING PROVISION SOUTH: 103 SPACES

PARKING DEMAND SOUTH: 88 SPACES

(ASSUMES 80% OF TOTAL DEMAND)

APA STANDARDS:

NATURE PARK: 30 SPACES

SKATE PARK: 20 SPACES

PUMP TRACK: 20 SPACES

SINGLE TRACK PATH: 10 SPACES

SPORT COURT: 30 SPACES

ON-STREET EVENT PARKING: 41 SPACES



DRAFT MASTER PLAN

