

US 278 Corridor Improvements

Project Update

April 21, 2022



The NEPA Process (overview)



---Public Engagement---



The NEPA Process

Start the Environmental Assessment

Public Information Meeting

1

Perform Technical Studies

2

Develop Alternatives

3

Analyze Alternatives

4

Second Public Information Meeting

5

Develop Preferred Alternative

6

Prepare Environmental Assessment

7

Third Public Information Meeting

Public Hearing

8

8a

Revise Alternative

9

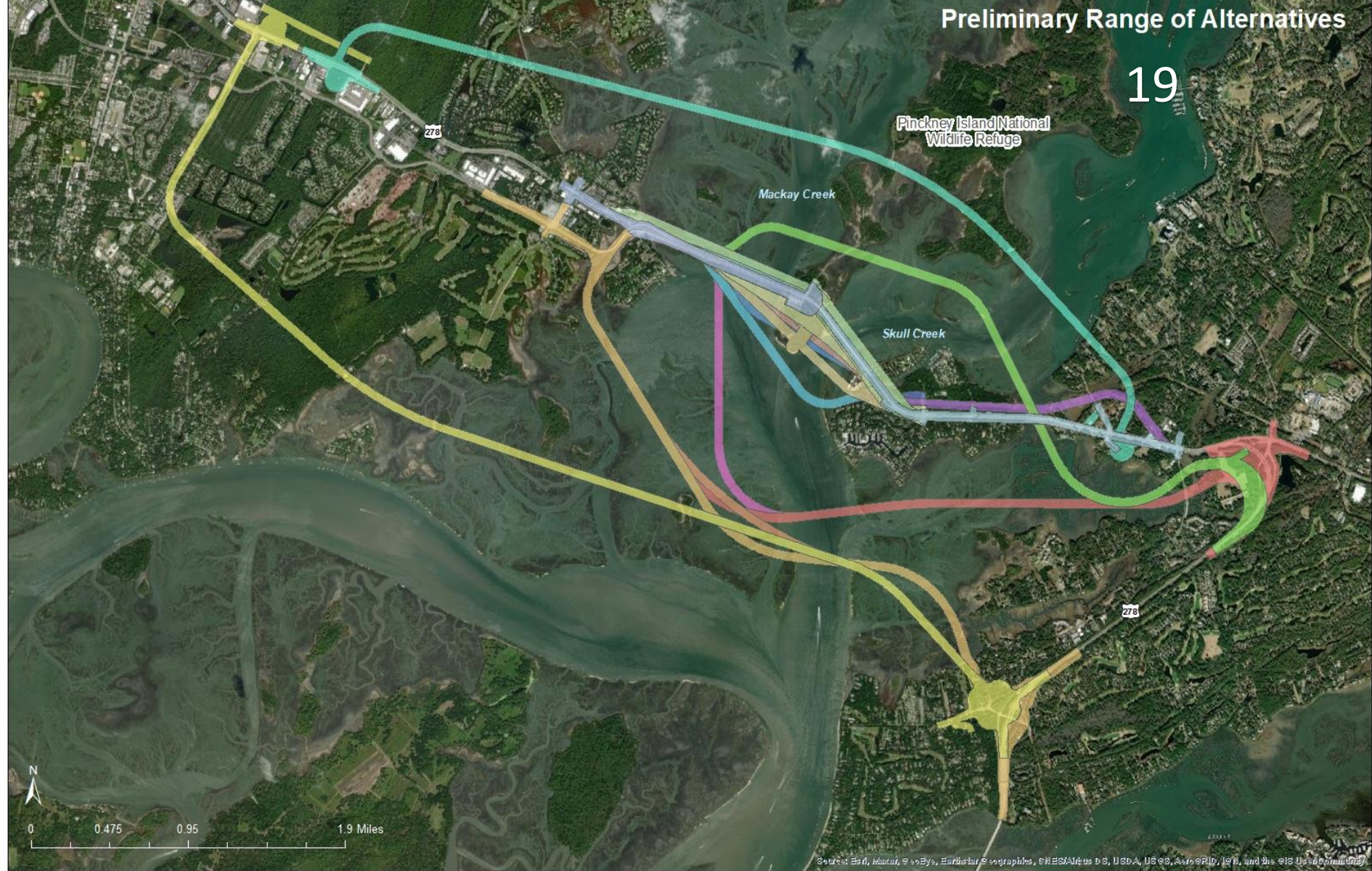
FHWA Decision

10

A FHWA decision does not mean
things cannot be adjusted

Preliminary Range of Alternatives

With input from the community, SCDOT developed 19 options for the Preliminary Range of Alternatives



US 278 CORRIDOR IMPROVEMENTS

ALTERNATIVES DEVELOPMENT FLOWCHART

Public Meeting
September 27, 2018

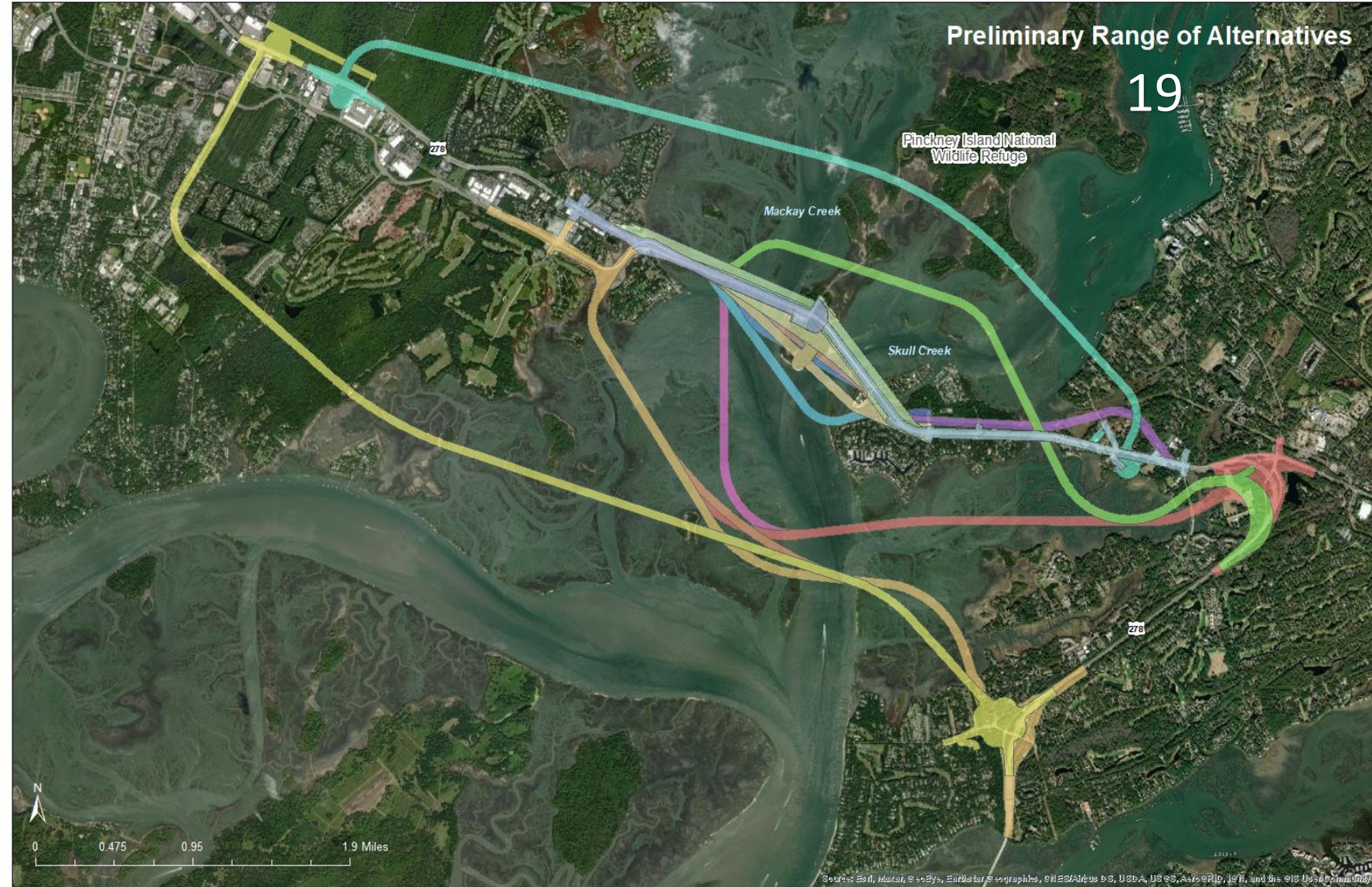
Preliminary Range of Alternatives

- No Build
- Widen Existing US 278
- New Alignment
- Travel Demand Management*
- Transportation System Management*
- Mass Transit*

Evaluation Criteria

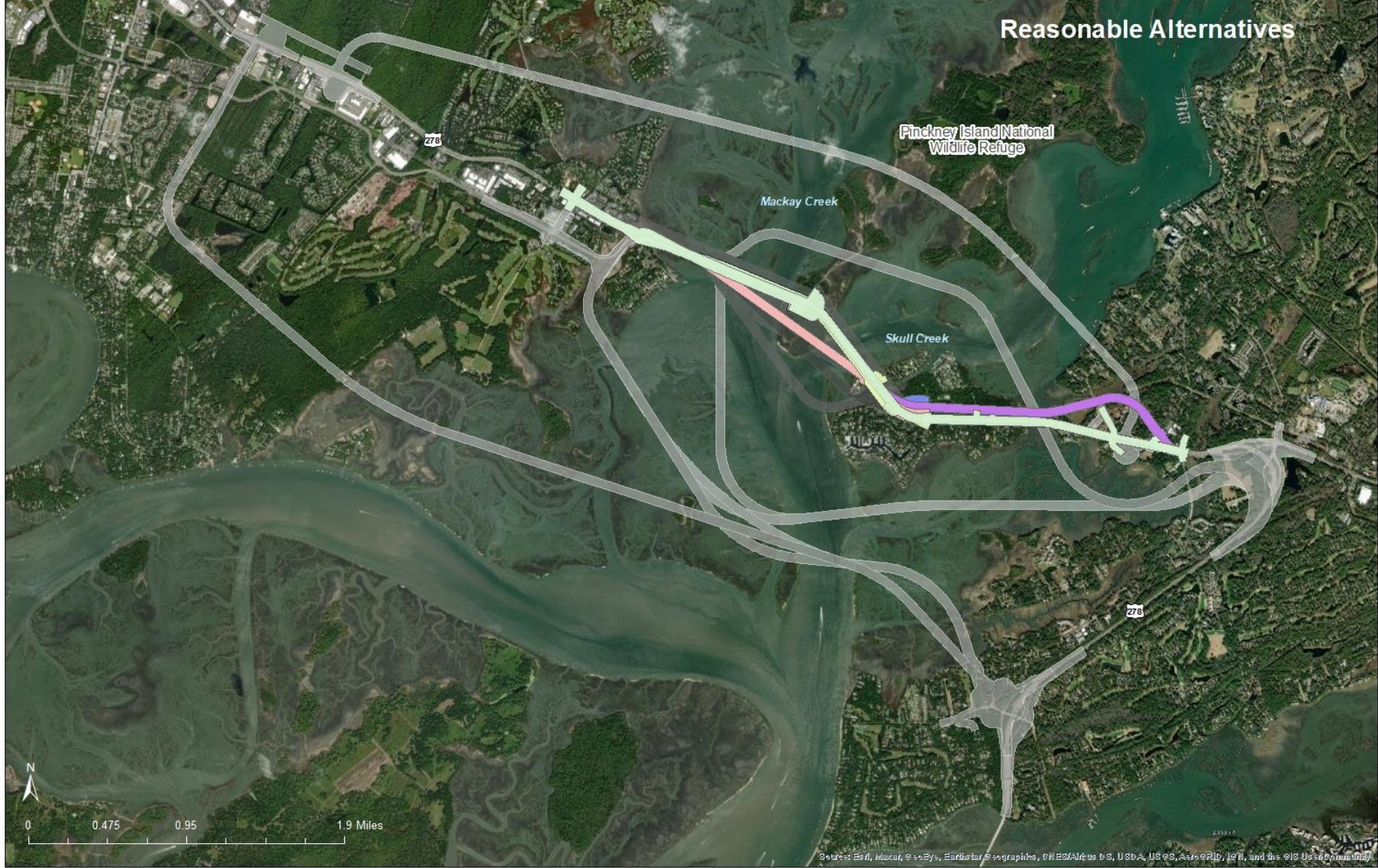
- Purpose & Need (Structural Deficiency)
- GIS Wetlands (Acres)
- Protected Lands (Acres)
- Right-of-Way Impacts
- US Fish & Wildlife Service Compatibility
- Neighborhoods Impacts

Alternatives Eliminated
Based on Criteria



Reasonable Alternatives

Once the NEPA matrix was applied to the 19 preliminary range of alternatives, 9 of those were classified as reasonable and carried forward



ALTER

VE

TRIX

US 278 Corridor							
Evaluation Criteria		No Build	1	2	3a	3b	4a
Addresses Structural Deficiencies to Eastbound over Mackay Creek	Yes / No	No	Yes	Yes	Yes	Yes	Yes
GIS-based Wetlands (Acres)	Freshwater	0	1				3
	Critical Area	0	29				49
	TOTAL Wetlands	0	31				53
Right-of-Way Impacts	Number of Tracts	0	30	124	124		130
	Number of Acres	0	29	82	80	97	87
Neighborhoods	Number of Neighborhoods	0	3				7
	Names	N/A	Buckingham, Moss Creek Plantation, Moss Creek Village	Big Stoney, Buckingham, Hog Island, Mariners Cove Club, Moss Creek Plantation, Moss Creek Village, Windmill Harbour	Big Stoney, Buckingham, Hog Island, Mariners Cove Club, Moss Creek Plantation, Moss Creek Village, Windmill Harbour	Big Stoney, Buckingham, Hog Island, Mariners Cove Club, Moss Creek Plantation, Moss Creek Village, Windmill Harbour	Big Stoney, Buckingham, Hog Island, Mariners Cove Club, Moss Creek Plantation, Moss Creek Village, Windmill Harbour
	Yes / No	No	Yes	Yes	Yes	Yes	Yes
Protected Lands	Number of Tracts	0	1		5	5	5
	Number of Acres	0		37	33	48	38
Consistent with Pinckney National Wildlife Refuge			Consistent	Consistent	Potentially Consistent	Consistent	
Carried Forward to Reasonable	Yes / No	Yes	No	Yes	Yes	No	Yes
Reasonable Alternative (RA)	#	No Build		RA1	RA2		RA3

Wetlands

RW Parcels

2 Relocations

NOTE: Transportation System Management (TSM)/Transportation Demand Management of these may be included with the Reasonable Alternatives and/or the Preferred Alternative.



4d

Yes

3

37

40

132

88

7

Big Stoney, Buckingham, Hog Island, Mariners Cove Club, Moss Creek Plantation, Moss Creek Village, Windmill Harbour

Big Stoney, Buckingham, Hog Island, Mariners Cove Club, Moss Creek Plantation, Moss Creek Village, Windmill Harbour

Big Stoney, Buckingham, Hog Island, Mariners Cove Club, Moss Creek Plantation, Moss Creek Village, Windmill Harbour

Yes

5

36

Yes

5

36

Yes

5

36

Yes

5

36

Yes

5

36

6d

Yes

6

116

122

83

110

11

Big Stoney, Buckingham, Indigo Run, Moss Creek Plantation, Moss Creek Village, Old South Villas, Old House Creek, Spanish Wells, Tanger 2, The Gatherings, The Lakes at Edgewater

Big Stoney, Buckingham, Indigo Run, Moss Creek Plantation, Moss Creek Village, Old South Villas, Old House Creek, Spanish Wells, Tanger 2, The Gatherings, The Lakes at Edgewater

Big Stoney, Buckingham, Indigo Run, Moss Creek Plantation, Moss Creek Village, Old South Villas, Old House Creek, Spanish Wells, Tanger 2, The Gatherings, The Lakes at Edgewater

Yes

2

48

Yes

2

48

Yes

2

48

Yes

2

48

Yes

2

48

Wetlands

RW Parcels

30+ Relocations

alternatives. During further alternatives development, elements



US 278 CORRIDOR IMPROVEMENTS

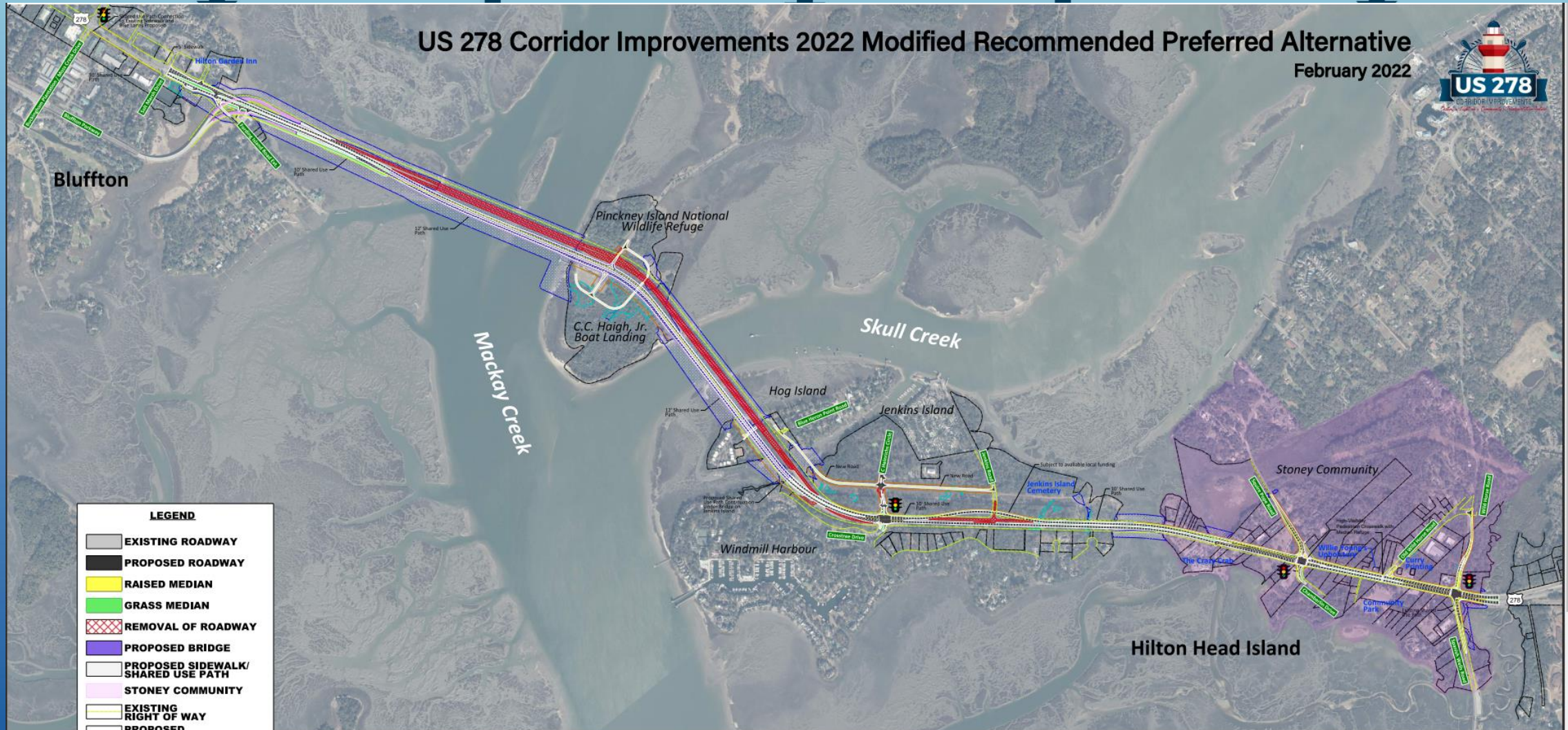
ALTERNATIVES DEVELOPMENT FLOWCHART

Public Meeting
September 27, 2018

Public Meeting
September 19, 2019

Public Hearing
Spring 2021

US 278 Corridor Improvements 2022 Modified Recommended Preferred Alternative
February 2022



uring
th the
native

Discussion

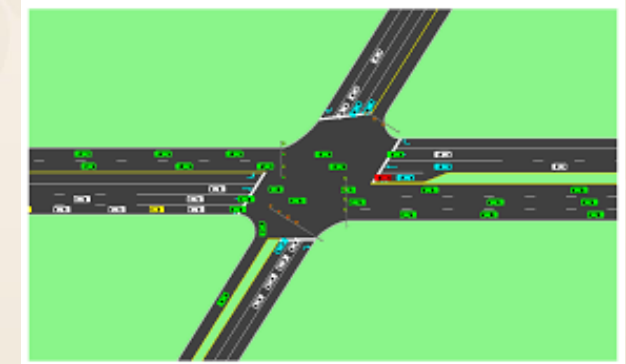
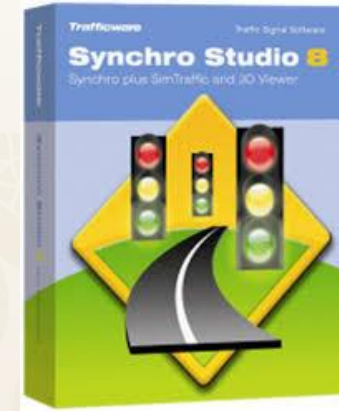
Traffic studies and Analysis (end to end computer modeling)



Synchro Traffic Modeling Software

SIM Traffic Entire Corridor				
		Eastbound		
		Travel Time (sec)	Travel Time (min)	Speed (mph)
AM	No Build	3572.4	59.5	10
	Modified RPA	843.6	14.1	24
	<i>Savings (compared to No Build)</i>	2728.8	45.5	
PM	No Build	1773	29.6	13
	Modified RPA	631.7	10.5	37
	<i>Savings (compared to No Build)</i>	1141.3	19.0	

SIM Traffic Entire Corridor				
		Westbound		
		Travel Time (sec)	Travel Time (min)	Speed (mph)
AM	No Build	1457.3	24.3	15
	Modified RPA	530.1	8.8	41
	<i>Savings (compared to No Build)</i>	927.2	15.5	
PM	No Build	3094.6	51.6	9
	Modified RPA	1179.8	19.7	18
	<i>Savings (compared to No Build)</i>	1914.8	31.9	

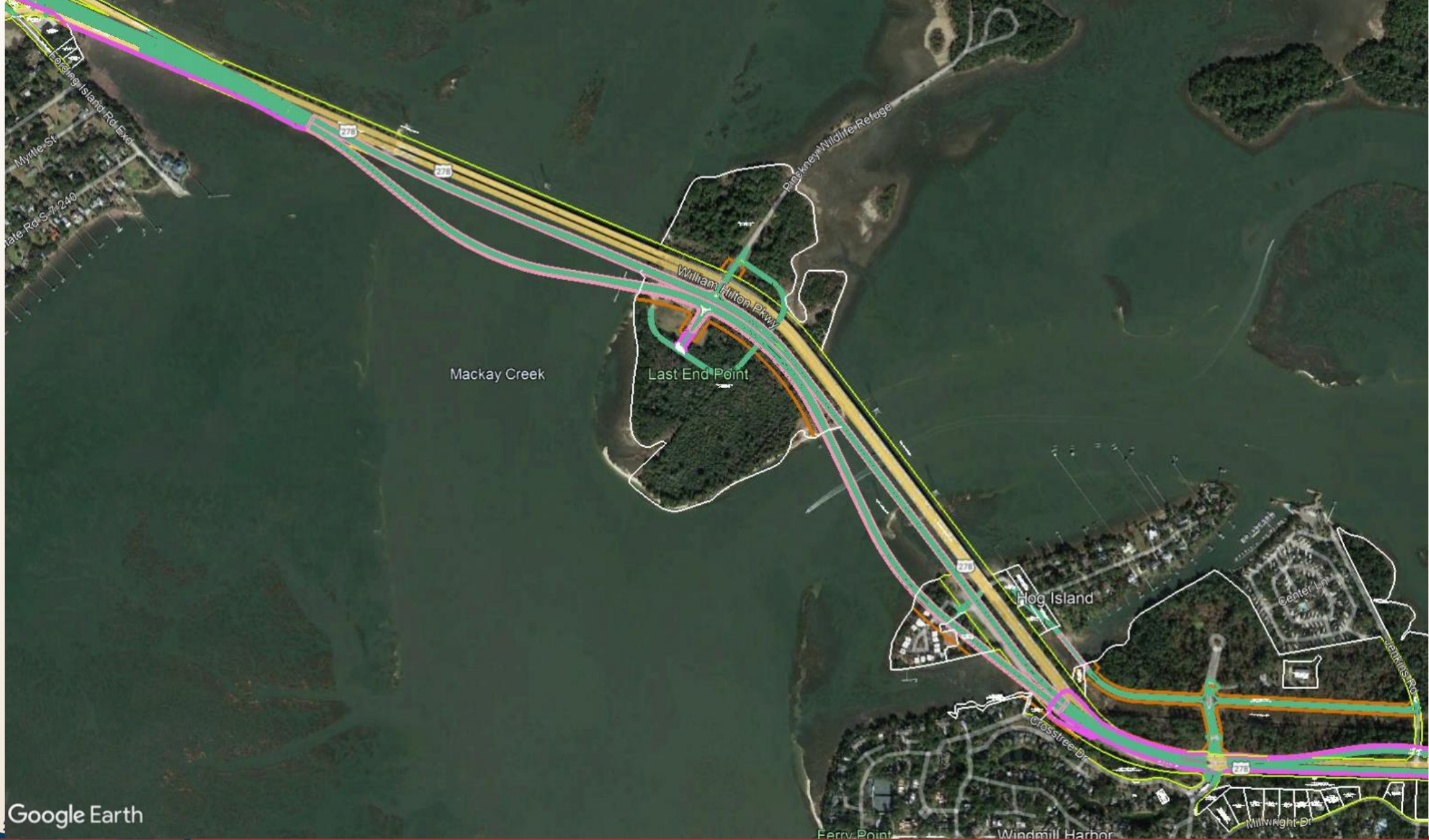


Single Bridge

Vs

Two Bridges





Google Earth

Two separate bridges
will create additional
wetland impacts,
essential fish habitat
(EFH) impacts,
residential relocations,
recreational impacts,
and right of way impacts

Google Earth

Contact



www.SCDOT278Corridor.com



info@SCDOT278Corridor.com



Facebook.com/SCDOT278Corridor



[@SCDOT278Corridor](https://twitter.com/SCDOT278Corridor)



Craig Winn, PE, CFM
Project Manager
SCDOT





Questions?